



12 Hobbis Drive, Maidenhead, SL6 5AN

£750,000 Freehold

CHAIN FREE. A four-bedroom linked-detached property situated in a quiet cul-de-sac location, overlooking playing fields and within walking distance of National Trust land at Pinkneys Green. The property is conveniently located for Maidenhead town centre, the Elizabeth Line station, local amenities, well-regarded schools, and nearby green spaces.

Covered Entrance Porch

Leading to

Entrance Hall

Storage cupboard, stairs to first floor landing

Cloakroom

WC, wash basin

Kitchen

Integrated double oven, ceramic hob, extractor fan over, space for dishwasher, washing machine and tall fridge /freezer, floor and wall cupboards with drawers, tiled splashbacks, work surface with inset stainless steel sink. Door leading to side access

Dining Room

Bay window

Sitting Room

Patio doors leading to garden

First Floor Landing

Loft access hatch, storage cupboard

Bedroom 1

Built in mirrored wardrobe

Ensuite

Enclosed shower, wc, wash basin, fully tiled

Bedroom 2

Bedroom 3

Bedroom 4

Built in wardrobe and storage cupboard

Bathroom

Panelled bath, wash basin, WC

Outside

There is a well maintained rear garden laid to lawn

The property benefits from a front garden with driveway access

Garage

Up and over door

Floor Plan

Approximate Floor Area = 106 sq m / 1140 sq ft
 Garage = 13.6 sq m / 146 sq ft
 Total = 119.6 sq m / 1286 sq ft

Hobbis Drive

Waterman
 Established 1990

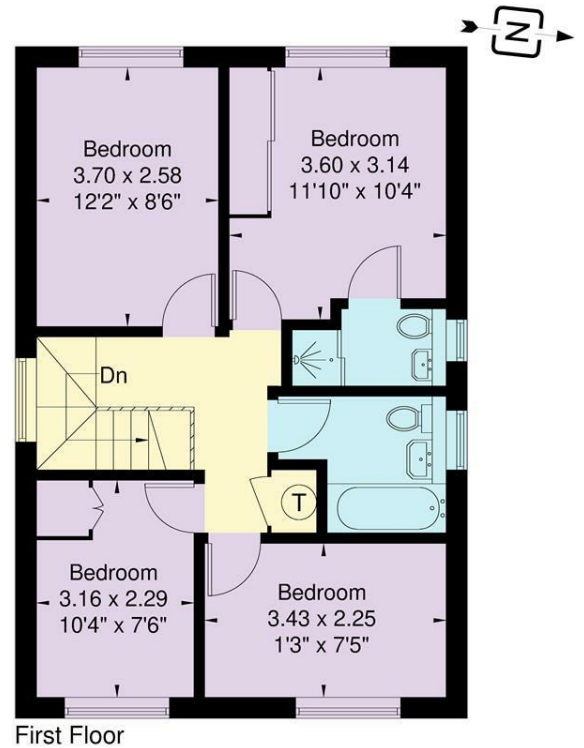
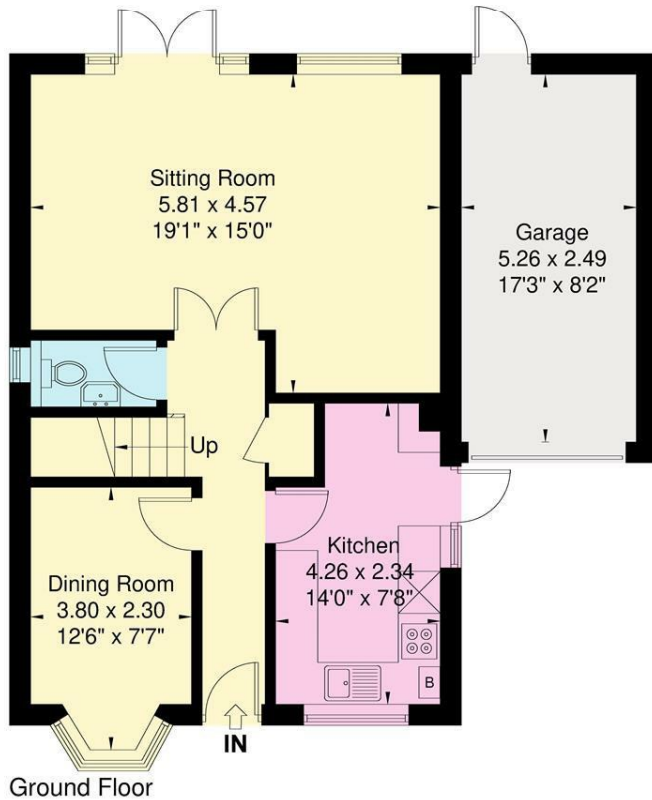
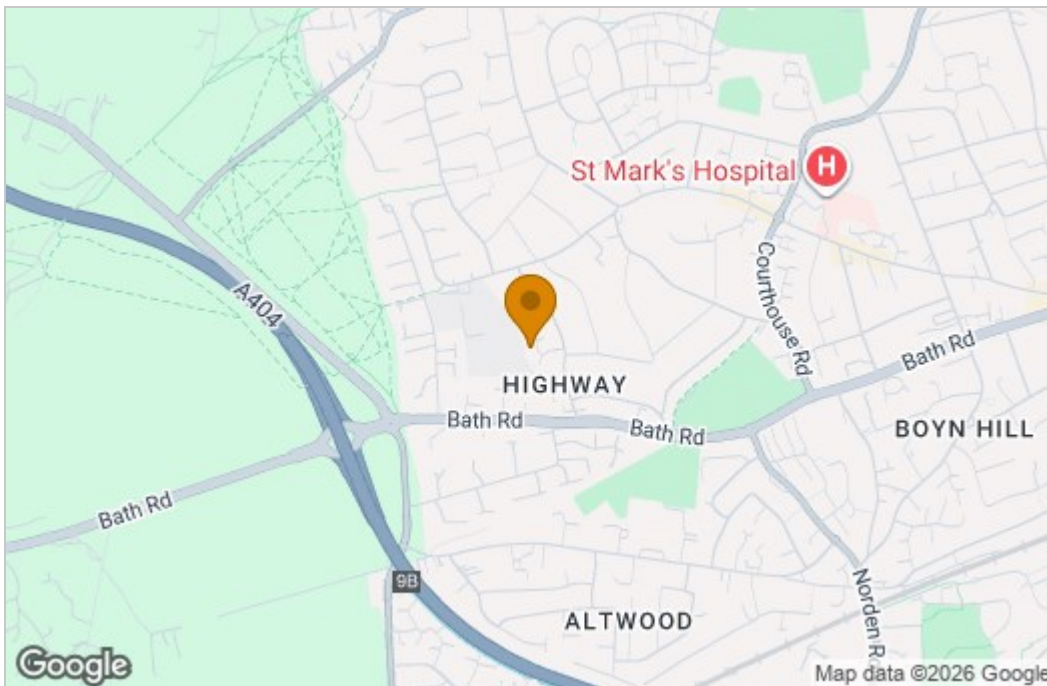
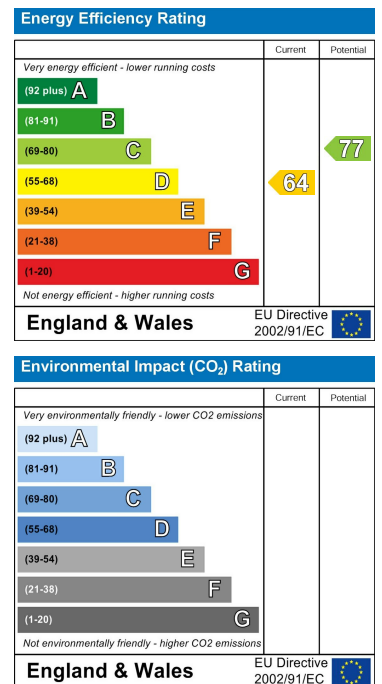


Illustration for identification purposes only, measurements are approximate, not to scale.

Area Map



Energy Efficiency Graph



These particulars, whilst believed to be accurate are set out as a general outline only for guidance and do not constitute any part of an offer or contract. Intending purchasers should not rely on them as statements of representation of fact, but must satisfy themselves by inspection or otherwise as to their accuracy. No person in this firm's employment has the authority to make or give any representation or warranty in respect of the property.